

# Implementing the Regional Growth Vision



Harold W. Barley  
February 2011



# How Shall We Grow?

## Creating *a* Shared Vision for Central Florida



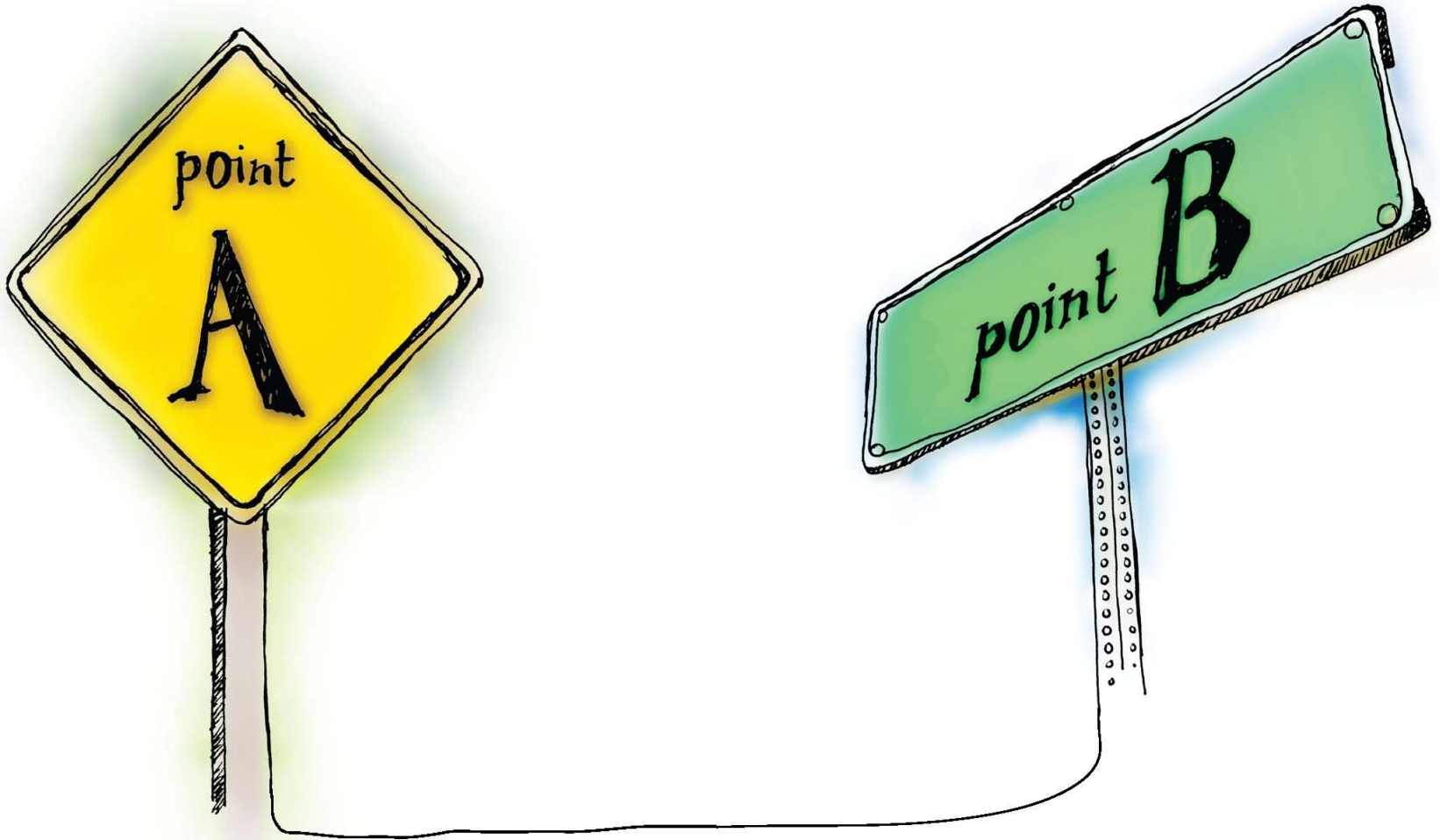
Map Area

### Map Key

- Hamlet: Less than 4,999
- Village: 5,000-9,999
- Town: 10,000-29,999
- Small City: 30,000-49,999
- Medium City: 50,000-99,999
- Regional City: 100,000 or more
- Highway
- County Border
- Undeveloped Area (2050)
- Recommended Conservation (2050)
- Existing Conservation (2006)
- Major Water Bodies
- Developed Area (2005)
- Active Railroad
- Inactive Railroad
- Future Needed Multi-Modal Transportation Connections



# 2030 Long Range Transportation Plan



# Year 2030 LRTP



Three major policy issues:

- Existing land use or alternative land use
- Highway dominated or more transit
- Existing revenue or enhanced revenue



# 2030 Long Range Transportation Plan



**Including:**

Future Transportation Financing

Alternative Land Use Approach



# Four Transformational Projects

# FUTURE I-4 IMPROVEMENTS

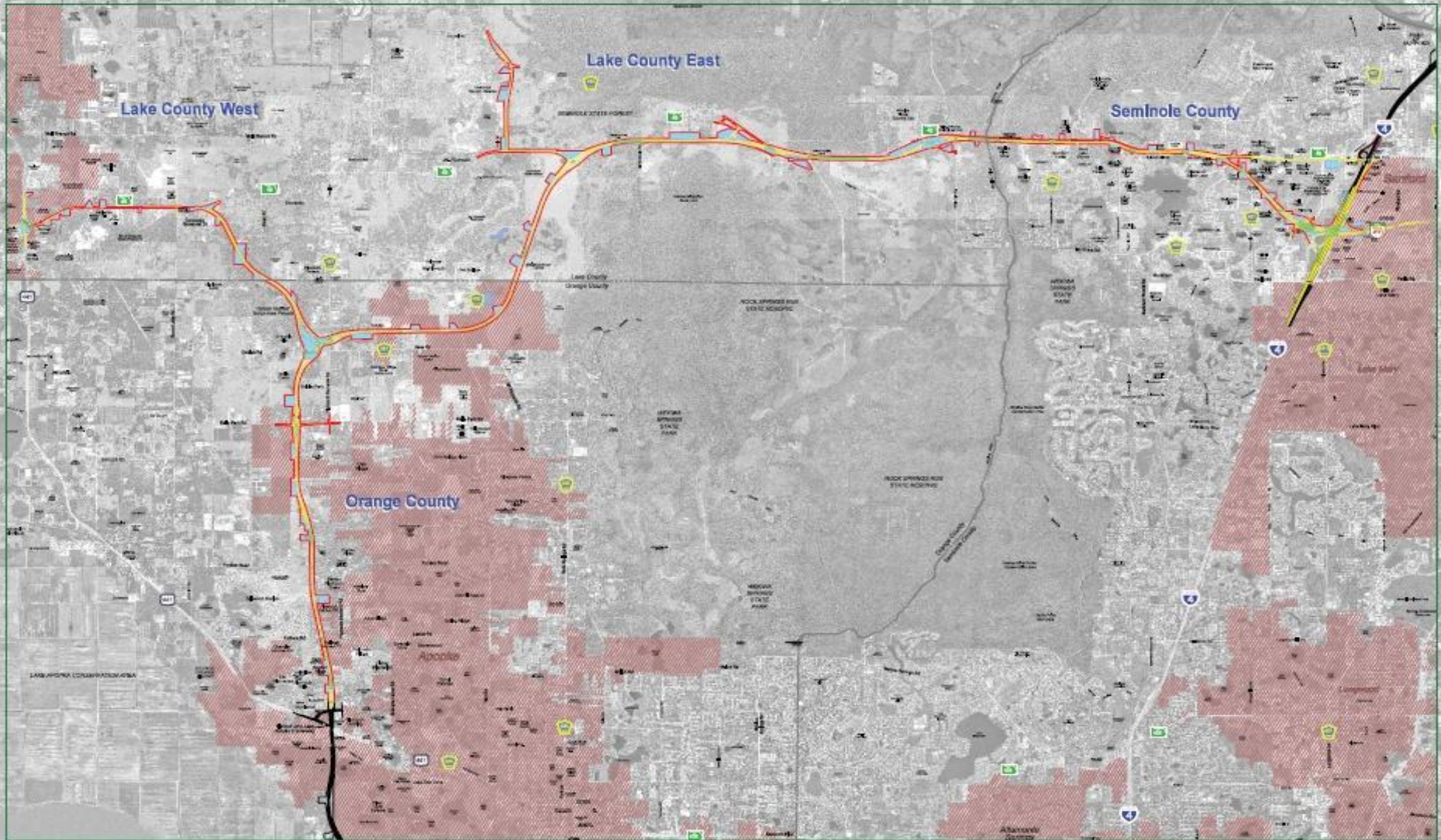


Special Use Lanes

Interchange Improvements



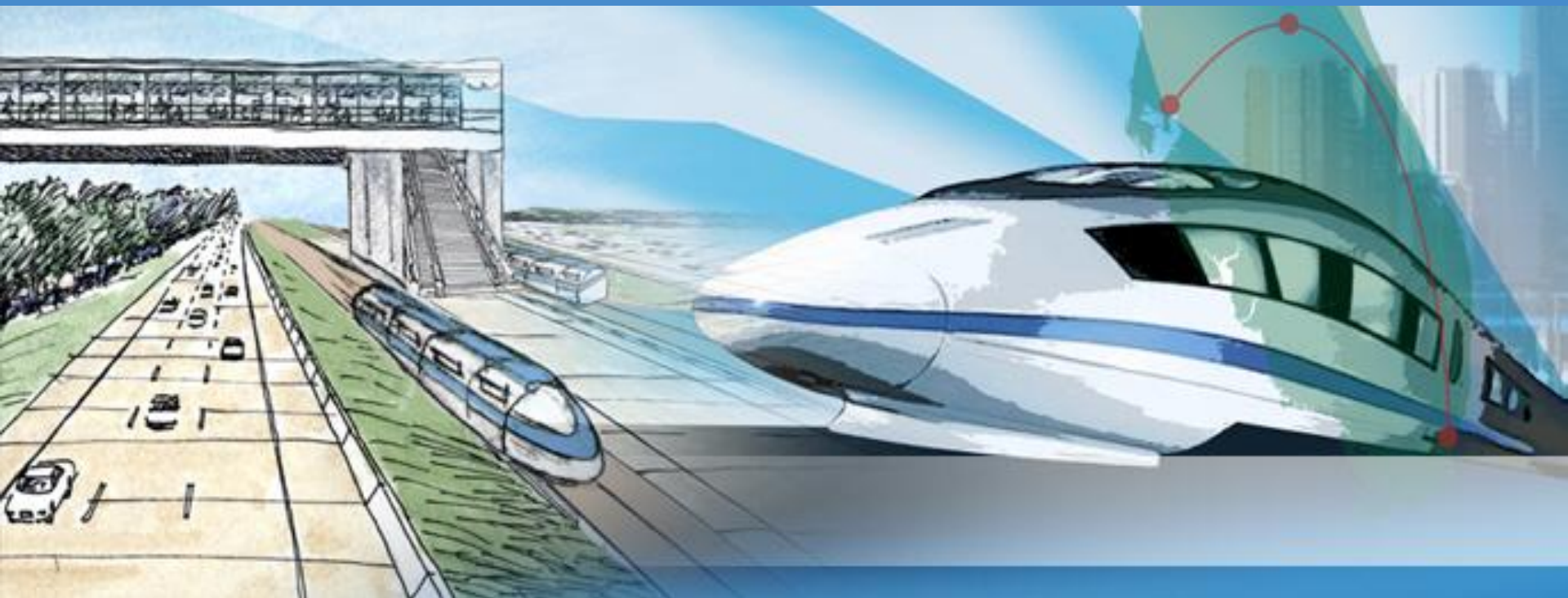
# Wekiva Parkway





**SunRail**

# FLORIDA HIGH SPEED RAIL



# Next transit projects



- East-West Corridor
- US 441 Corridor
- Premium transit corridors

# Challenges



- *How Shall We Grow?* - 2007 and 2011
- Reinforcement of HSWG legacy
- Policing of HSWG principles

# Congress of Regional Leaders



- Shift from planning to implementation
- Support for new funding sources
- Next level regionalism



metroplan orlando

*A REGIONAL TRANSPORTATION PARTNERSHIP*