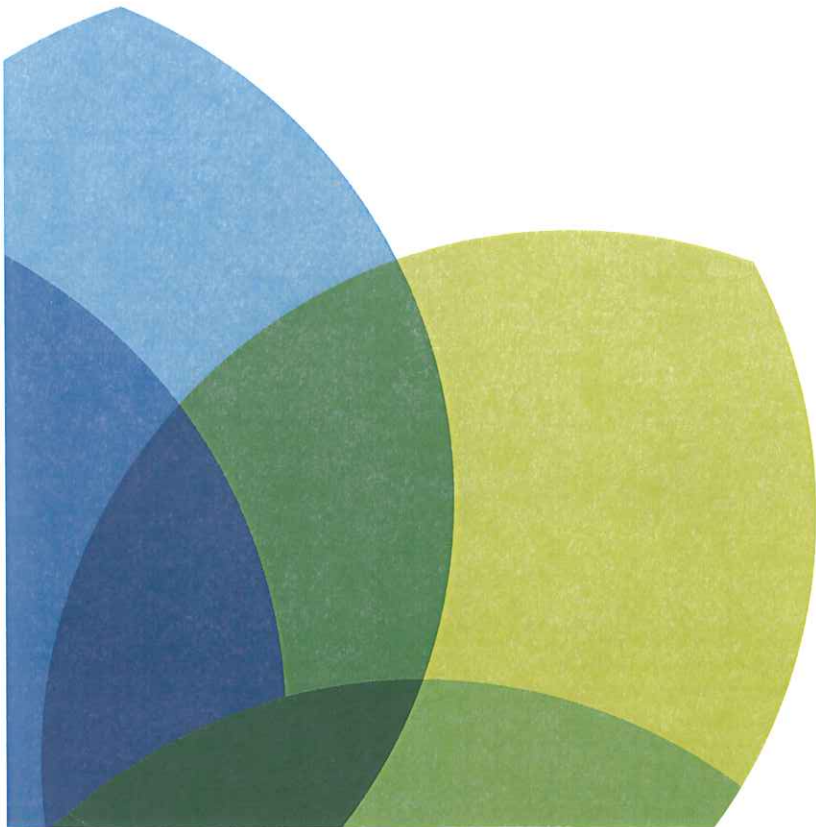


ideas to results



CENTRAL FLORIDA
PARTNERSHIP

The Central Florida Partnership – America's Newest Regional Partnership

Overarching Mission

Anticipate the complexities of global markets, growth and collaboration and respond with timely and appropriate action to ensure economic prosperity and quality of life.

Structure

A platform for collaboration where ideas are turned into results and where projects are successfully advanced to benefit the millions of people who call Central Florida home.

Governance

Leaders from the public, private and civic sectors in Central Florida convene with world-class experts to set priorities, address tough challenges, and advance the region as a global leader.

Intended Outcomes

World-class **Transportation Systems** for residents and visitors; Programs, activities and educational opportunities establishing the Americas' best **Regional Entrepreneurship** system; **Regional Leadership Development** that encourages, cultivates and recruits emerging leaders; **Regional Public Policy Advocacy** that moves important dialog about issues and candidates to the public arena; Examination of demographics and trends through **Regional Research** that support regional growth and competitive advantage.

Lines of Business (Organizational Expertise)

Regional Entrepreneurship
(Orlando Regional Chamber of Commerce)
Regional Leadership *(Leadership Orlando)*
Regional Research and Resolves *(myregion.org)*
Regional Public Policy Advocacy *(BusinessForce)*
Regional Transportation *(Special Task Force)*

Regional Service Area

Brevard, Lake, Orange, Osceola, Polk, Seminole and Volusia Counties

Founding Board of Directors

2008 Chair, Des Cummings, Jr., Ph.D.
Florida Hospital Foundation
2009 Chair, Patricia J. Engfer
Hyatt Regency Orlando International Airport
2010 Chair, Alex Martins
Orlando Magic
C. T. Hsu, C.T. Hsu Group + Associates
James M. Lewis, Walt Disney World Co.
Kelley P. Mossburg, Schenck Company
President, Jacob V. Stuart, Central Florida Partnership

Established

Responding to what Central Florida's leaders were asking for, and in a historic vote of confidence by members of the Orlando Regional Chamber of Commerce and the community-at-large, the Central Florida Partnership was established December 12, 2007.

ideas
to results

P. O. Box 1234 | Orlando FL 32802 | 407.835.8005
www.centralfloridapartnership.org | www.ideastoreresults.org

Central Florida: Defining the Regional Boundaries

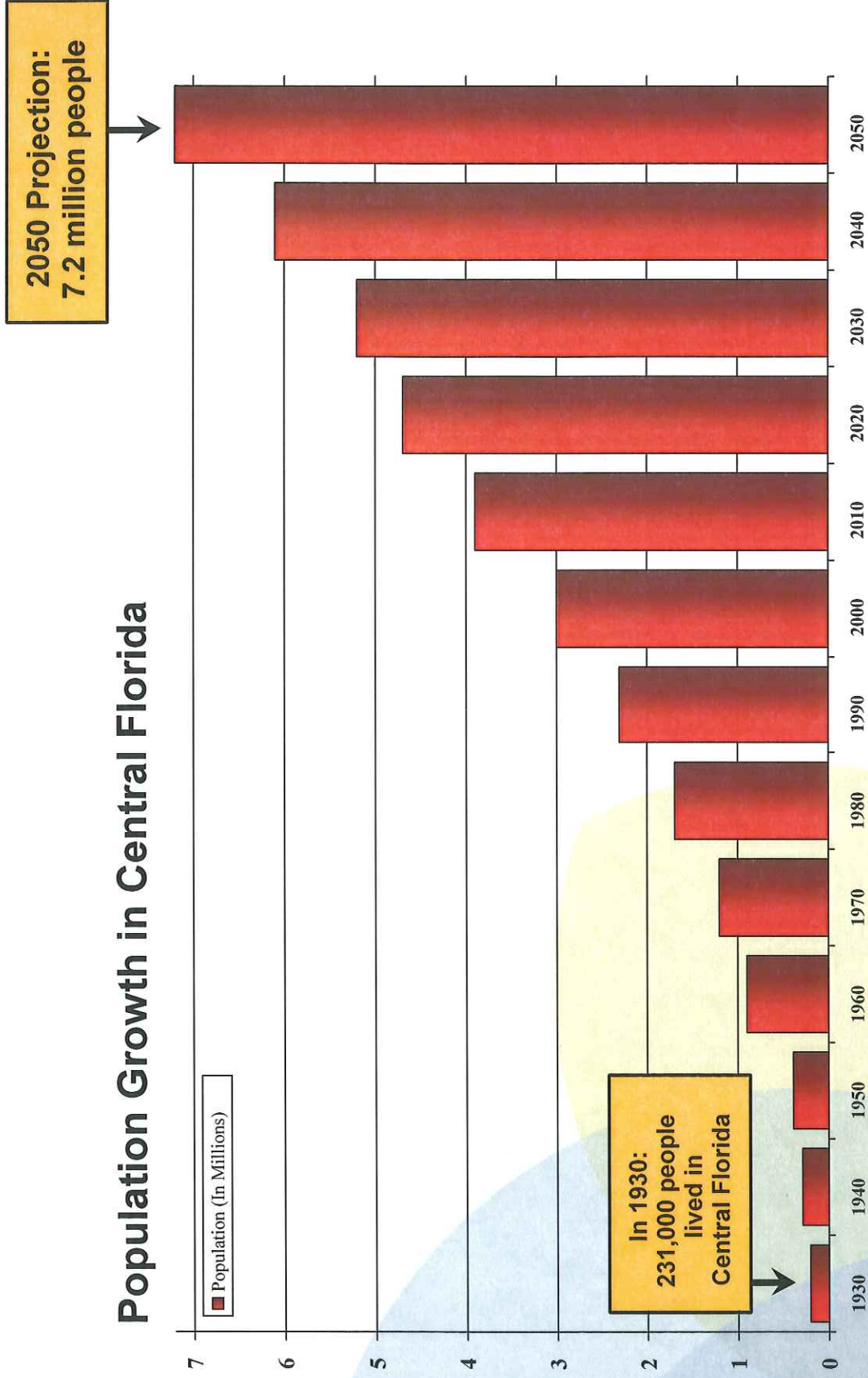
Seven Counties
Brevard, Lake, Orange,
Osceola, Polk, Seminole
and Volusia

86 Cities
Public, Private
and Civic Leaders



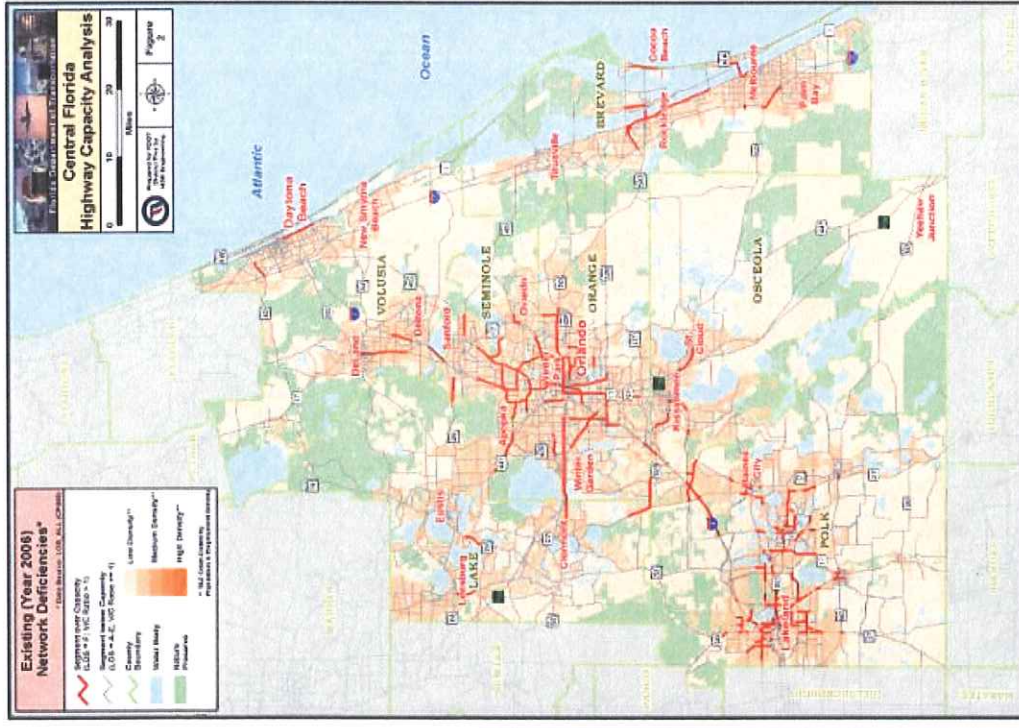
The Path We're On

Population Growth in Central Florida

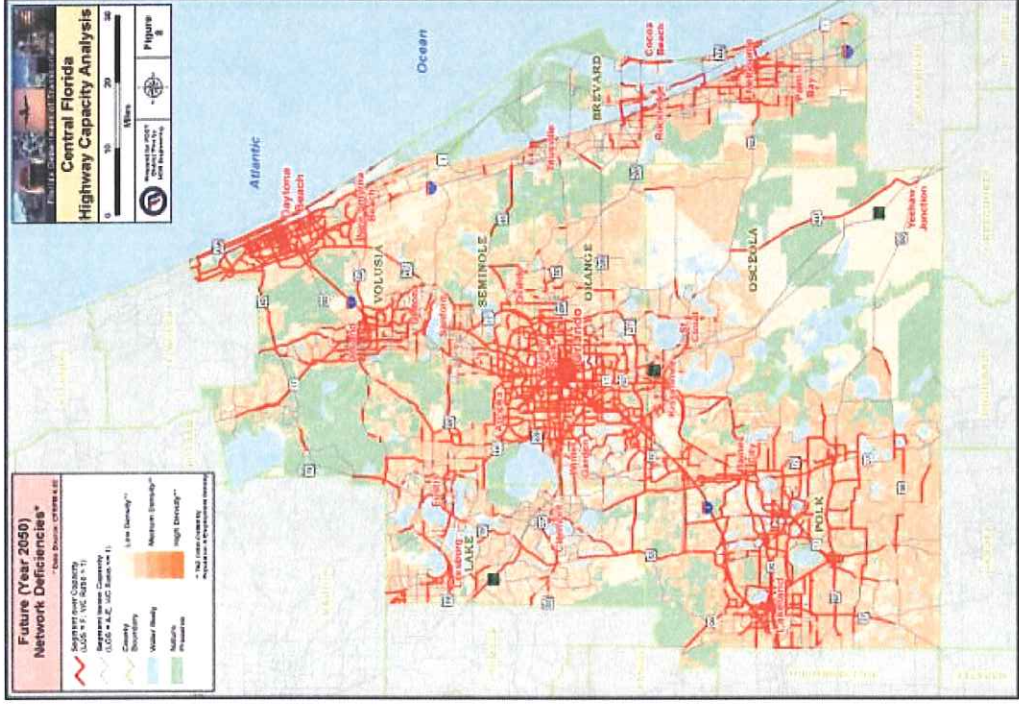


Source: University of Florida Bureau of Economic and Business Research

It's Our Choice



2006



2050



CENTRAL FLORIDA
PARTNERSHIP

It's Our Choice

